

TREND

TRADING MACHINE

TRADING MANUAL



Trend Trading Machine - Getting Started Manual

Welcome to the *Trend Trading Machine* community! You've just gained access to a powerful, systematic approach to options trading that has been helping traders achieve consistent results in the markets.

This manual will guide you through our proven strategy, risk management principles, and how to make the most of your membership. Our goal is to help you become a confident, successful, options trader using our time-tested methodology.



Core Strategy

Our strategy focuses on three key principles:

1. Option Selection:

- Trade options on ETFs that track our target assets
- The CIPHER Algo will choose entry and exit points for cryptos selected by the Algo. Then options with 60 days until expiration will be selected.
- We select strikes just above the money.

2. Position Management:

- Sell 50% of position at 100% profit
- Hold remaining position with 50% trailing stop or exit at 200% gains if the price goes beyond 250% and back to 200% gains.
- Maintain 50% trailing stop loss on all positions

3. Risk Management:

- Never risk more than 1-4% of your total trading or investing portfolio/account on any single trade
- Keep a detailed trade journal for performance tracking



Weekly "Chart Room" Sessions

Join us every Wednesday at 1:00 PM EST for our live Chart Room sessions!

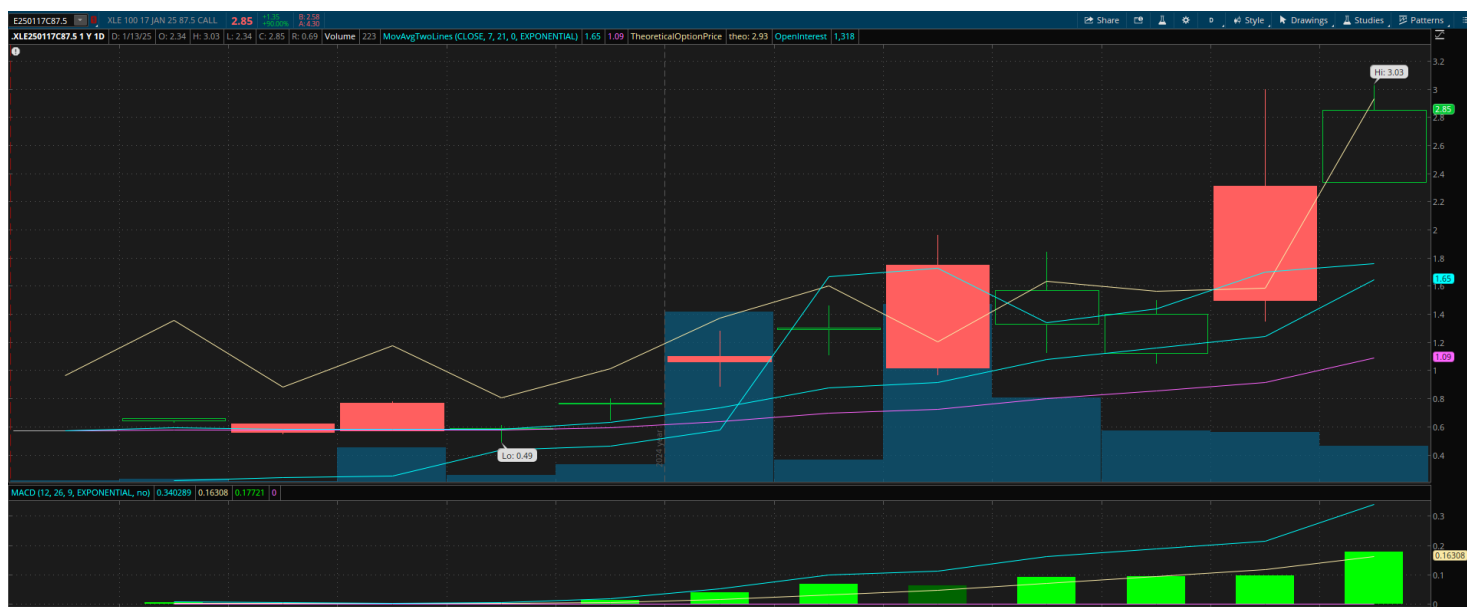
What to Expect:

- Live market analysis and trade reviews
- Current position updates
- New trade opportunities
- Q&A session with our trading expert(s)
- Community interaction and learning

How to Participate:

1. Log into your member dashboard
2. Click on the 'Chart Room' button
3. Join 5-10 minutes early
4. Be ready for a detailed discussion
5. Bring your questions!

All sessions are recorded and archived for a month in your member area for future reference. From time to time we do have technology issues and may have errors with archived footage before the one month period, resulting from unexpected vendor issues, which we can not control.



Trade Management Guidelines

Our Entry Advisory Process:

1. We will confirm trend alignment on multiple time frames
2. Verify option strike price is above current market price
3. Check option expiration falls within 15-60 day window
4. Calculate and confirm account risk parameters and advise if the trailing stop loss needs to be different than 50%.
5. Publish trade with limit order

Exit Rules:

1. Sell 50% of position when profit reaches 100%
2. Set trailing stop at 50% for remaining position
3. Exit full position if stop loss is hit
4. Consider rolling options within 7 days of expiration

Position Monitoring:

- Check email and positions daily one hour before market closes
- Update the trailing stops as needed based on any recent advisories
- Document all trades in your trade journal

